

DEVELOPMENT OF A RECONCILIATION STRATEGY FOR THE LUVUVHU AND LETABA WATER SUPPLY SYSTEM

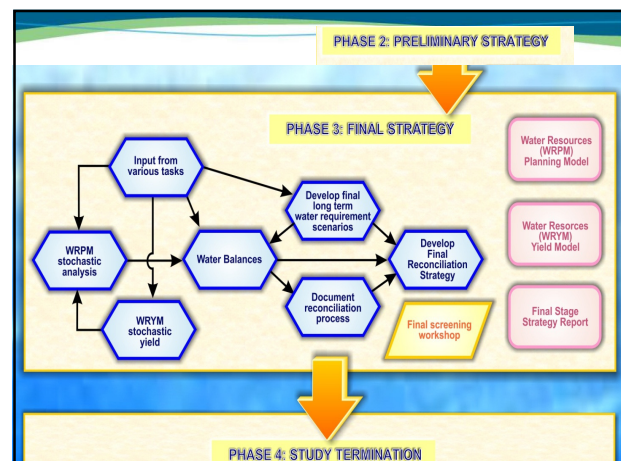
Study Progress

Study Steering Committee meeting
31 October 2012



Layout

- Background
- Completed Tasks
- Tasks in process
- Tasks still to commence



Study Tasks

- Inception , summary of previous and current studies (1)
- Preliminary screening workshop (2)
- System Analyses (3, 8, 12, 13, 14)
 - Hydrological, Yield (WRYM), Planning (WRPM), Water quality
- Water use and needs (4, 7, 9, 11)
 - Requirements and return flows, Invasive alien plants, Reserve, International obligations
- Intervention option (5, 6, 10, 15, 16)
 - WC/WDM, Water re-use, Schemes (surface and groundwater), Social & environmental assessment
- Formulation of scenarios to inform strategy (17, 18)
 - Final screening workshop
- Stakeholder engagement and public participation (19)
- Study Management (20)

TASKS COMPLETED

Inception Phase

- Draft inception report distributed for comments
- Comments were received and included
- Irrigation data from Validation data suspect
- This will influence execution & completion time by approximately 5 months
- Additional task to determine water use in WMA
- Deliverable: Final Inception Report
(www.dwa.gov.za/Projects/Luvuvhu/default.aspx)

7



8

Reports listed in Inception Report

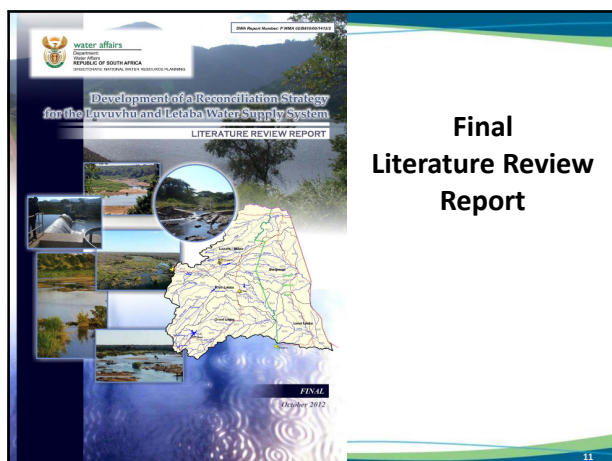
Report no.	Name or description	Associated task
1	Inception Report	0
2	Literature Review Report	1
3	Water requirements and Return Flow Report (Also include a section on the International obligations)	4 & 11
4	Rainfall analysis report	3
5	Hydrology report (includes IAP)	3 & 7
6	Water Conservation and Water Demand Management Report	5
7	Water re-use report	6
8	Water Quality Assessment Report	8 & 13
9	Groundwater utilization scenarios	10
10	Preliminary Reconciliation Strategy (or first stage) Report	17a
11	Executive Summary of Preliminary Reconciliation Strategy Report	17a
12	Yield Analysis Report (Includes IAP & EWR)	12 & 9
13	Planning Analysis Report	14
14	Water Supply Schemes Report & Social+Envir Aspects)	15 & 16
15	Final Reconciliation Strategy reconciliation strategy Report	17b
16	Executive Summary of Final Reconciliation Strategy reconciliation Report	17b

9

Summary of Current & Previous Studies (2)

- Draft Report comments were received and included
- Final Literature Review Report now available
(www.dwa.gov.za/Projects/Luvuvhu/default.aspx)

10



11

Preliminary screening workshop (2)

- Completed at previous SSC
- Comments received at Screening Workshop included in "List all schemes and options" document
- These options used as input to other tasks
 - Task 15 Review Schemes and Update cost estimates

12

Completed Tasks (Presentations)

- Demographic component (Item 10)
- Rainfall analysis (Item 11)
- Water Quality (Item 12)
- Water Re-use (Item 12)
- Water Conservation & Water Demand Management (Item 13)
- Draft reports available for distribution (www.dwa.gov.za/Projects/Luvuvhu/default.aspx)

13

TASKS IN PROCESS

14

Study Tasks in Process

- **Hydrological analysis** (Task 3)
- **Water Requirements and Return flows** (Task 4)
- **WC and WDM – Irrigation** (Task 5)
- **Water Re-Use** (Task 6)
- **Invasive Alien Plants** (Task 7)
- Reserve Requirement Scenario Analysis (Task 9)
- Yield Analyses (Task 12)
- Review Schemes and Update cost estimates (Task 15)
- Stakeholder Engagement and Public Participation (Task 19)
- Study Management (Task20)

15

TASKS STILL TO COMMENCE

16

Study Tasks Still to commence

- **Groundwater Utilization Scenarios** (Task 10)
- **Honouring International Obligations** (Task 11)
- **Water Quality Modelling** (Task 13)
- **Planning Analysis - WRPM** (Task14)
- **Review or Assess Social & Environmental Impacts** (Task 16)
- **Assembly of Information and Formulation of Scenarios** (Task 17)
- **Final Screening Workshop** (Task 18)
- **Study Termination** (Task 21)

17

Thank You

18